



# LEARNING<sup>by</sup>EMC2 EXPEDITION

Seattle

**Discover  
Explore  
Inspire**

**27 > 31 May 2019**

**EMC2** brings you to Seattle,  
for a learning expedition at the crossroads of  
the **digital and manufacturing industries**.

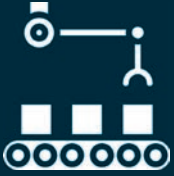
## Seattle, the “other place to be” for innovative companies

.....

The Seattle economy is high-tech, innovative and diversified. The city is home to numerous multinationals and global leaders, but also to start-ups and cutting edge research centres. At the crossroads between Asia and Europe, over 40% of jobs in the city are internationally oriented. It's an international platform for business and innovation.







## Manufacturing

Going back as far as the Gold Rush, Seattle has been at the forefront of innovation and ahead of international trends. Today the region is an innovation hub with its sights set on the Industry of the Future, with a particularly strong presence in cleantech and energy efficiency. The region is one of the world's largest Aerospace hubs and is home to Boeing Commercial Airlines along with over 800 suppliers, accounting for 17% of aerospace employment in the US, and over 176,000 jobs.



## Digital

Seattle is one of the leading centres for communications and information technologies, home to digital leaders such as Microsoft, Amazon, Tableau, Zillow or Expedia, and some 3000 companies from the sector. The city has become the international reference for technologies like cloud computing and data visualisation. In the United States, Seattle is rated higher than Boston and New York for attracting start-ups.



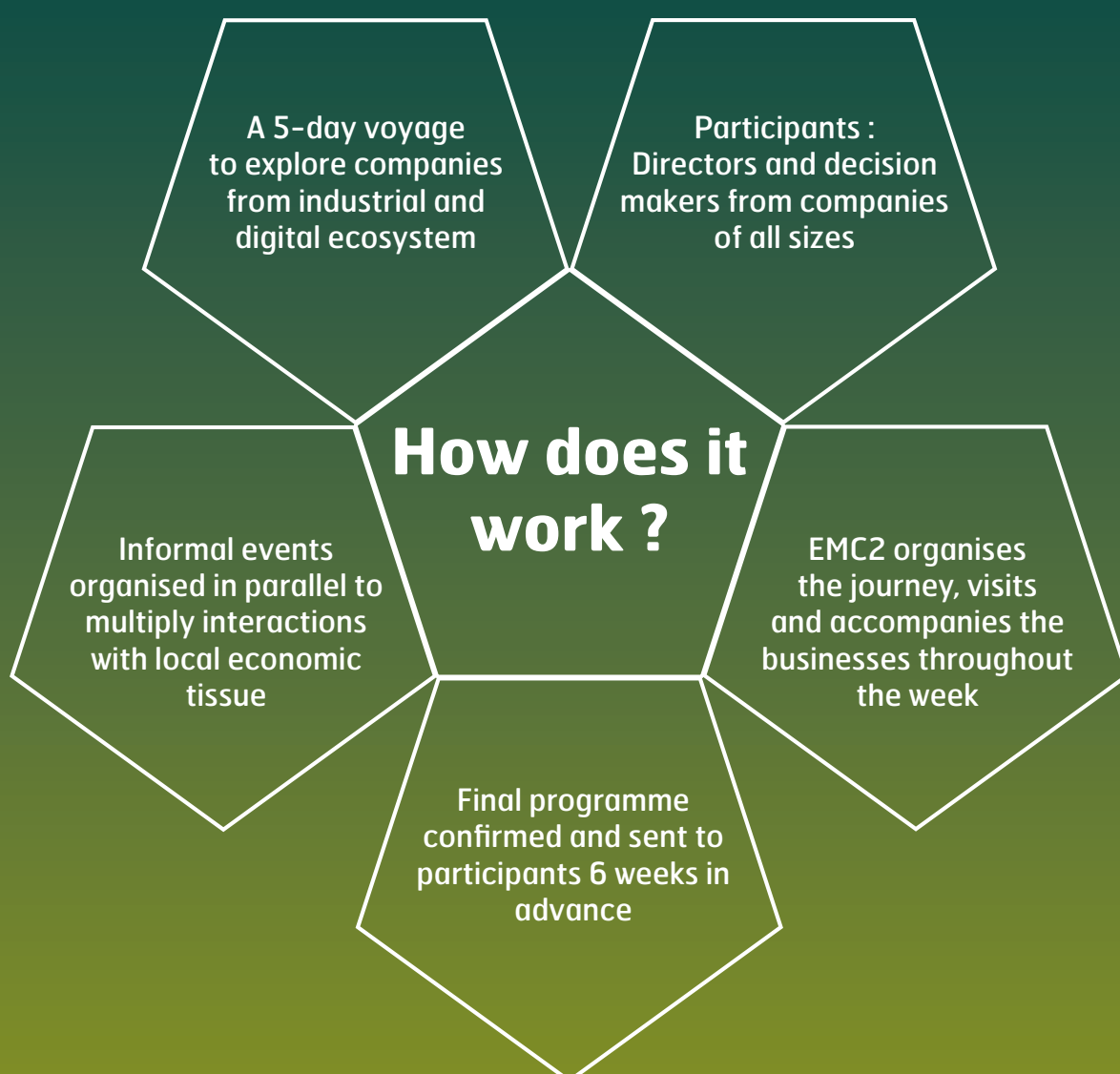
# Learning Expedition : The Concept

---

**1** Bespoke Programme  
in Seattle

**2** At the forefront Digital &  
Manufacturing

**3** Personalised  
accompaniment



# Discover, explore, be inspired

---

5 days to inspire creativity, learn from different models and to gain new perspectives on innovation...



## LET US GUIDE YOU !

# Programme • 27 > 31 May 2019

MONDAY	TUESDAY	WEDNESDAY	THURSDAY	FRIDAY
Arrival		LEx Workshop	LEx Workshop	LEx Workshop
	Visits	Visits	Visits	Visits
Lunch	Lunch	Lunch	Lunch	Lunch
B2B Meetings	Visits	Visits	Visits	Departure
LEx Workshop	Social Event	Social Event	LEx Exchanges	

## Suggested visits\*

BOEING COMPANY • MICROSOFT • AMAZON • PACCAR • BILL AND MELINDA GATES FOUNDATION • ELECTROIMPACT • BLUE ORIGIN • MTORRES • F5 • ALLEN INSTITUTE FOR ARTIFICIAL INTELLIGENCE • LEOSTELLA • BLACKSKY • VALVE

*\*final programme will be confirmed 4 weeks before journey*

- .....
- For more information on the programme, please contact  
 Fearghus ROCHE  
[fearghus.roche@pole-emc2.fr](mailto:fearghus.roche@pole-emc2.fr)  
 Phone. +33 (0)2 28 44 36 05  
 Cell. +33 (0) 6 48 47 71 48

# Rates

.....

The price includes all costs relating to the Learning Expedition : personalised preparation with each participant, 5 days of company visits, design-thinking workshops, 5 nights hotel in the heart of Seattle, breakfasts, lunches and dinners during the stay, as well as all local transport.

This price does not include the cost of the flights to Seattle nor the travel insurance for the participant.

**Places are limited !**



\* Before 25/03/2019

## General conditions

.....

- 100% payable by transfer upon reservation, on reception of invoice from EMC2
- Cancellation of reservation will entail :
  - 50% of fee up until 10 days before the trip
  - 100% of fee if cancelled less than 10 days before departure

EMC2 is insured against all liabilities during the Learning Expedition in Seattle.  
EMC2 will not be held liable for flights or train tickets issued through third parties.



# THE EXPLORERS OF 2017

.....





## ORDER FORM

In order to confirm your place for the Seattle Learning Expedition,  
please fill out and sign the order form below.

**Please return this signed document**

**By postal service to**

Pôle EMC2  
Chemin du Chaffault  
44340 Bouguenais  
FRANCE

**By email to**

fearghus.roche@pole-emc2.fr

Organisation .....

First Name ..... Surname .....

Position .....

Invoicing Address .....

.....

Cell Phone |.....| |.....| |.....| |.....| |.....|

Email .....@ .....

I wish to reserve ..... place(s) for the Seattle Learning Expedition, at the price of :

- 3500 € (VAT excl) before March 25<sup>th</sup> - early bird

- 4200 € (VAT excl)

for a total of ..... € (VAT excl)

☐ I accept the general conditions

Date .....

Signature